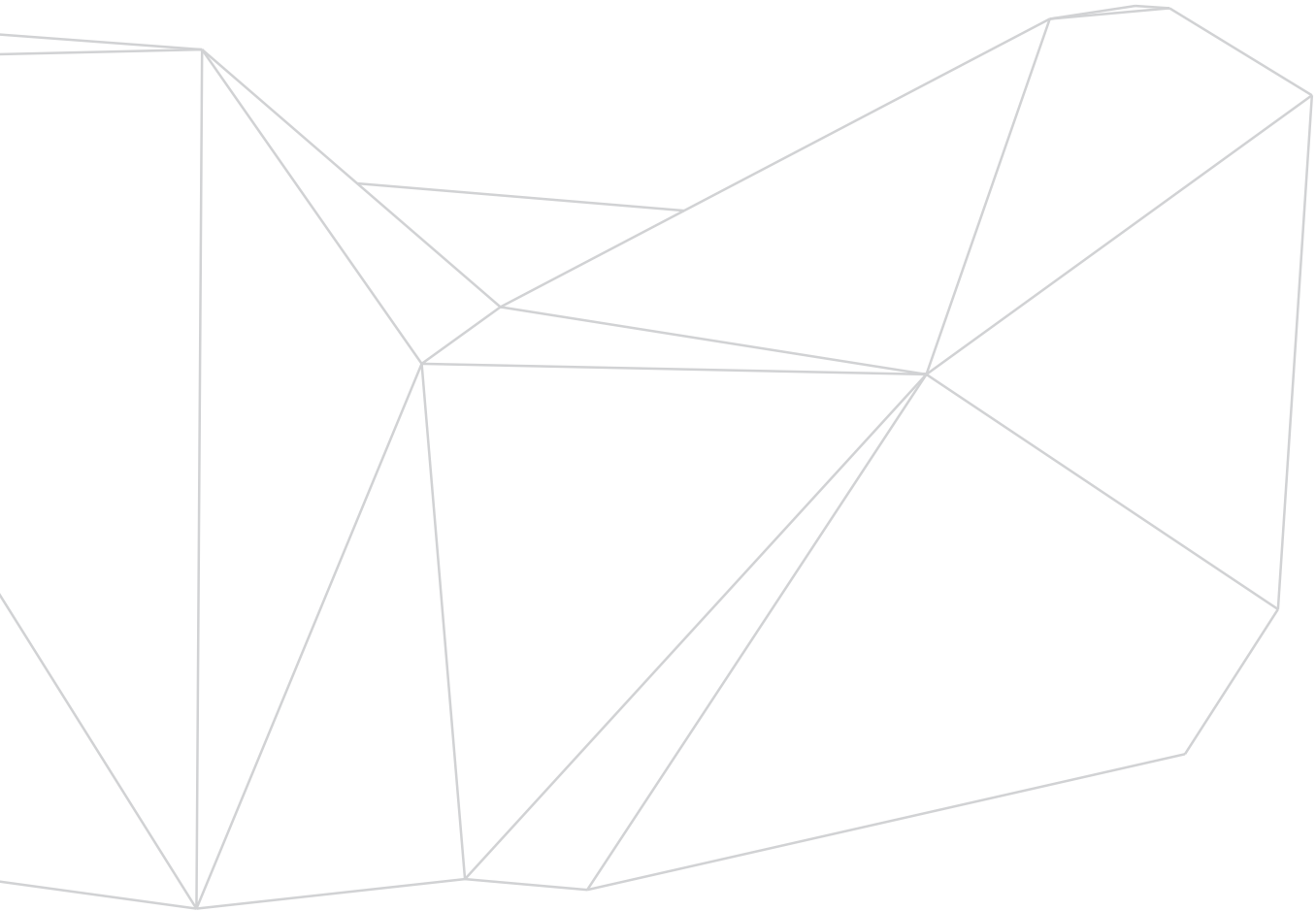


receptek



**Healthcare furniture systems**

# NURSEBASE CLASSIC

Scrutinised from every angle, 'Nursebase' excels in infection prevention, ergonomics, aesthetics, cable management, maintenance, cost and durability.

Many subtle details are incorporated within the design to make this the most 'fit for purpose' product available. Nursebase is built around aluminium extrusions, designed and developed exclusively by Receptek.

## Key features

Aluminum extrusions provide corner protection.

Post form plinth detail to avoid delamination by cleaning equipment.

DDA Modules.

Removable/replaceable panels.

Adjustable monitor support with security fixings and steel back plate.

Lockable CPU holder.

Tambour fronted security box with flap for keyboard and mouse.

Optional signage wall with large capacity void allows access from floor and ceiling for free standing desks.

Panels machined to allow direct access into proprietary trunking systems.

Proprietary trunking system can be supplied by Receptek or be without for an electrical contractor to install.

nursebase



# Nursebase Classic

## Typical Plan View

### WORKTOPS & CONSOLE TOPS

Option 1 25mm Laminate faced MDF with 2mm PVC edging to all exposed edges.

Option 2 25mm Marmoleum faced MDF with 2mm PVC edging.

Option 3 16mm Solid grade laminate. (Trespa).

Option 4 Solid surface material with MDF core – finished thickness 35mm.

### INTERNAL AND EXTERNAL FACE PANELS

18mm MDF core with Laminate or real wood veneer face. No edging required as panels sit within framework extrusions.

### PLINTHS

18mm MDF with brushed aluminium laminate to face. Exposed corners post formed.

### FRAMEWORK

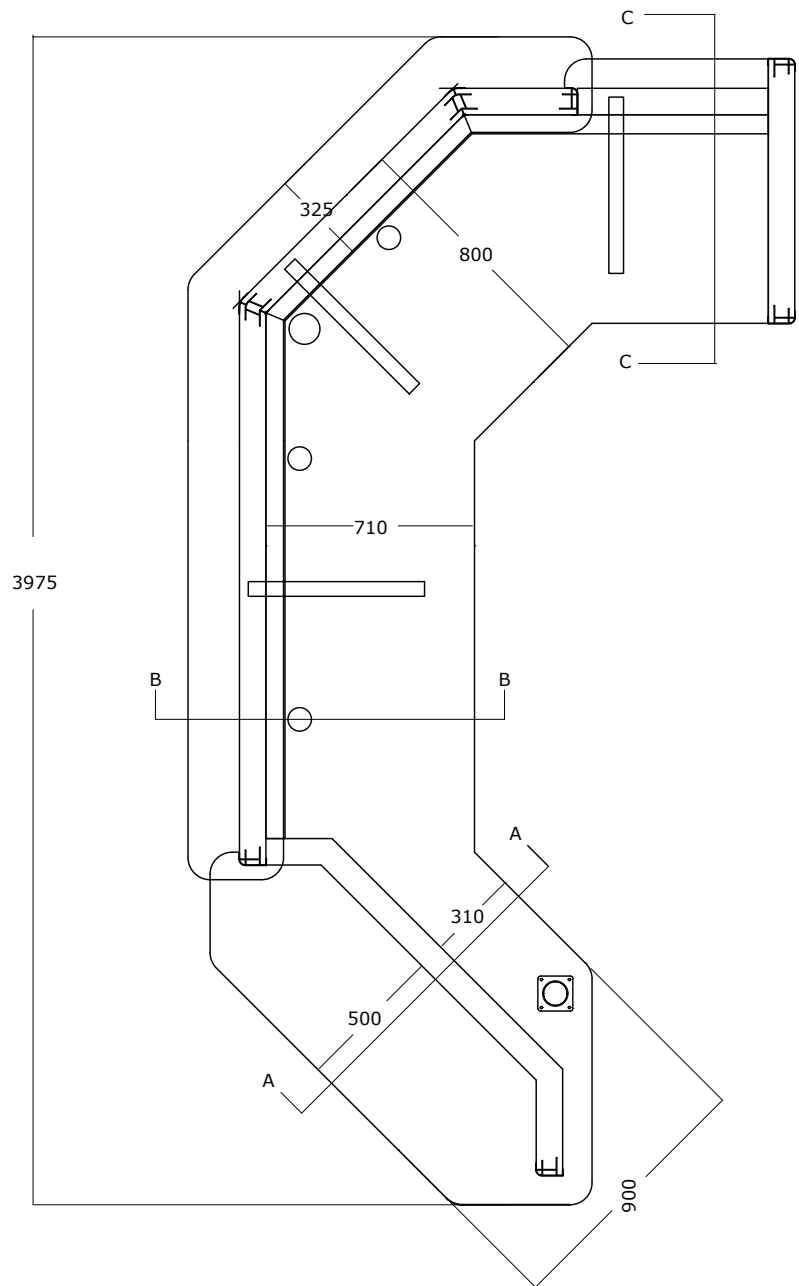
Satin anodised aluminium extrusions. Option to be powder coated.

### C-SHAPED SUPPORT LEGS

Powder coated mild steel 50mm x 50mm section.

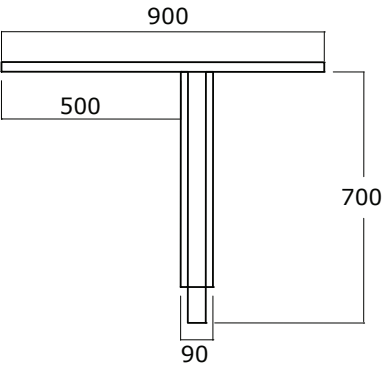
### FIXINGS

Stainless steel M6 socket drive button head machine screw.

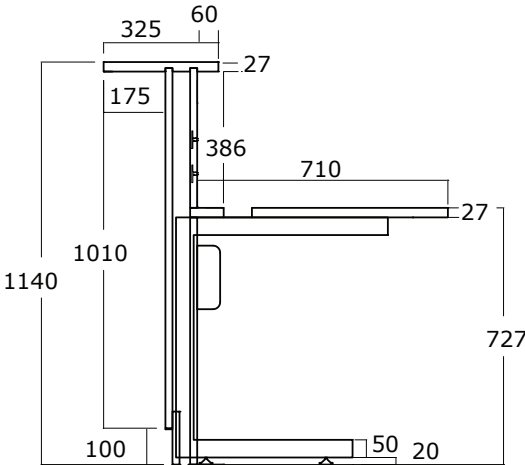


# Nursebase Classic Drawings

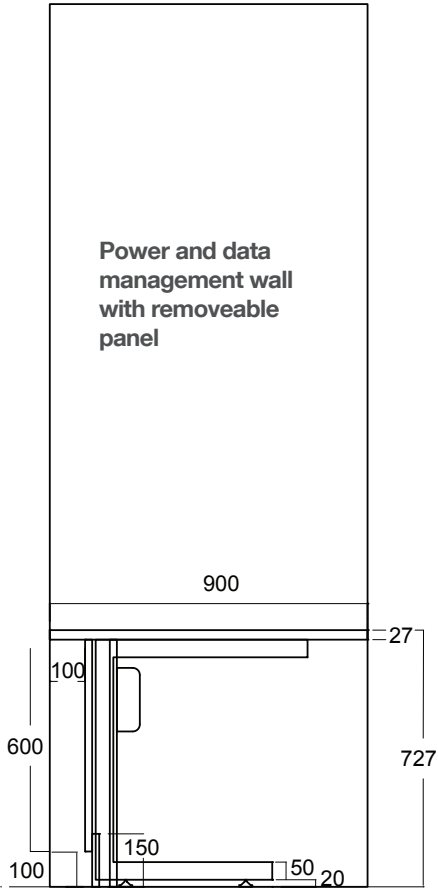
Section A



Section B



Section C







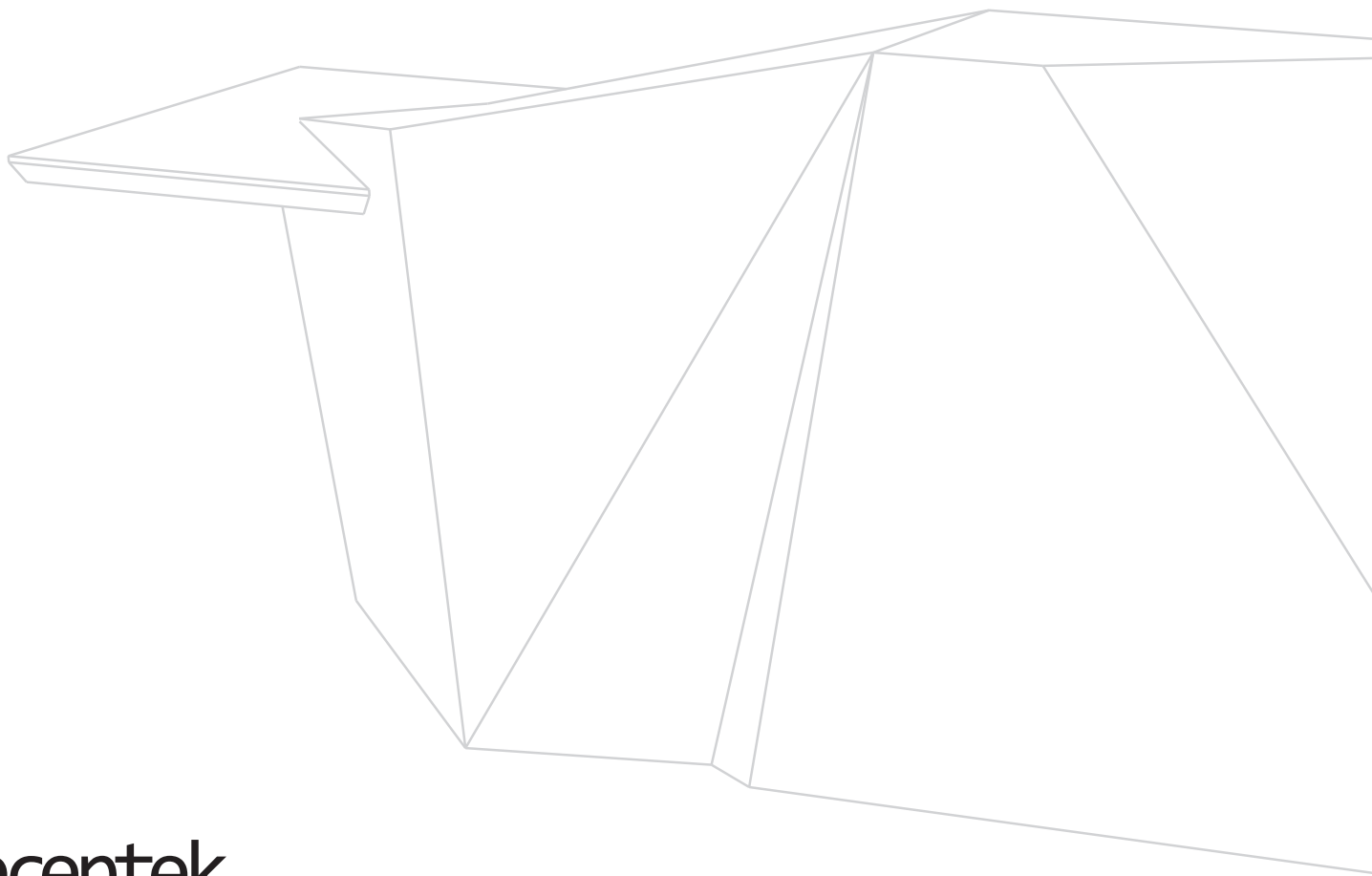






## Products





# receptek

---

**Contact Us**

+44(0)1472 360 111  
hello@receptek.co.uk  
www.receptek.co.uk

**Head Office**

Receptek, Estate Road 2,  
South Humberside Industrial Estate,  
Grimsby, DN31 2TG

---